

The Greater St. Louis  
Area Council - Boy Scouts  
of America

# Venturing Program Preview Guide

2020-2021

A comprehensive Venturing  
program guide for the Greater St.  
Louis Area Council - Boy Scouts of  
America for 2020 through 2021.

A young man is climbing a dark, mossy rock face. He is wearing a blue helmet, a blue t-shirt, black shorts, and a blue harness. He is secured by a purple rope. The background shows a steep, rocky cliffside with some green moss and a dark crevice.

VENT

# What's inside:

Get firsthand information on:

Membership

Programs and Events for 2020-2021

Trainings

Unit Planning & Budget Resources

Weekend Camping

GSLAC Properties

Product Sales

and MORE!

All specifically for Venturing!

---

[STLBSA.ORG](http://STLBSA.ORG)

# TABLE OF CONTENTS

## UNIT RESOURCES

CONTACT US & COUNCIL MAP	P:4
COUNCIL SERVICE CENTERS	P:5
CREW CALENDAR PLANNING	P:6
CREW BUDGET PLANNING	P:7
MEMBERSHIP & RECRUITMENT	P:9
SCOUTBOOK RESOURCES	P:10
JOURNEY TO EXCELLENCE	P:11

## FUNDRAISING RESOURCES

POPCORN SALES	P:8
CAMP CARDS	P:8
FRIENDS OF SCOUTING	P:8

## EVENTS AND PROGRAMS

TRAINING	P:12-14
VENTURING EVENTS	P:15-16
SCOUTFEST	P:17

## CAMPS

PROPERTIES	P:18-20
SUMMER CAMPS	P:21-25
EXPLORING	P:26
OTHER RESOURCES	P:27

## Venturing.

Provides positive experiences through exciting and meaningful youth-run activities for pursuing special interests, growing by teaching others, and developing leadership skills.

(young women & men ages 14-20 or 13 years old & completed 8th grade)



# CONTACT US

Stay up to date on all of the Greater St. Louis Area Council's information and events by following us on social media and check our website often!



facebook.com/stlbsa



@stlbsa



@stlbsa

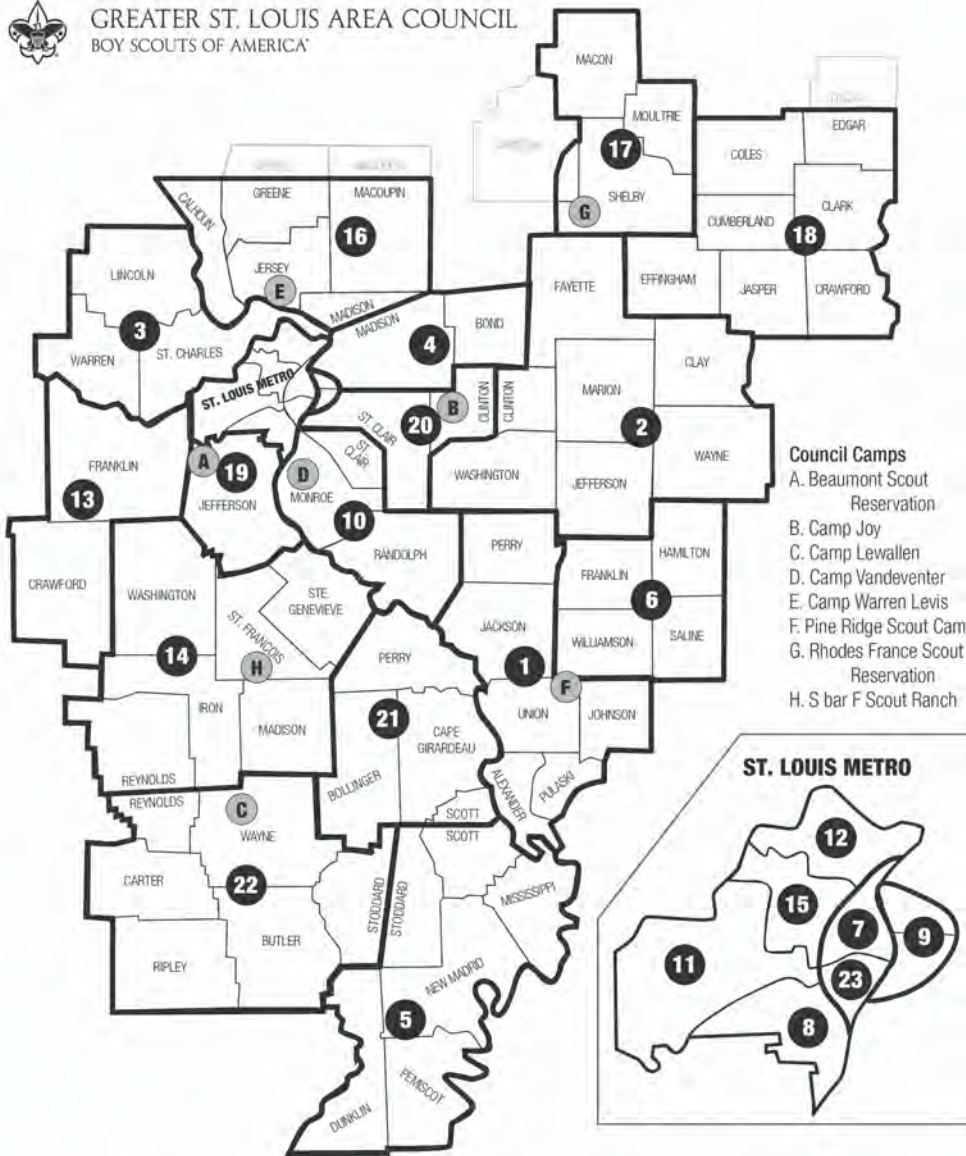
website: [stlbsa.org](http://stlbsa.org)

phone: 314-361-0600

email: [pr@stlbsa.org](mailto:pr@stlbsa.org)



GREATER ST. LOUIS AREA COUNCIL  
BOY SCOUTS OF AMERICA



- Council Camps**
- A. Beaumont Scout Reservation
  - B. Camp Joy
  - C. Camp Lewallen
  - D. Camp Vandeventer
  - E. Camp Warren Levis
  - F. Pine Ridge Scout Camp
  - G. Rhodes France Scout Reservation
  - H. S bar F Scout Ranch

- |                            |                           |                                 |                           |
|----------------------------|---------------------------|---------------------------------|---------------------------|
| 1. Big Muddy District      | 7. Grand Towers District  | 13. Osage District              | 19. River Trails District |
| 2. Black Gold District     | 8. Gravois Trail District | 14. Ozark Trailblazers District | 20. St. Clair District    |
| 3. Boone Trails District   | 9. Illini District        | 15. Pathfinder District         | 21. Shawnee District      |
| 4. Cahokia Mounds District | 10. Kaskaskia District    | 16. Piasa Bird District         | 22. Sioux District        |
| 5. Cherokee District       | 11. New Horizons District | 17. Arrowhead District          | 23. Thunderbird District  |
| 6. Egyptian District       | 12. North Star District   | 18. Redhawk District            |                           |



[STLBSA.ORG](http://STLBSA.ORG)

# COUNCIL SERVICE CENTERS

*We are here for you.*

All service centers are open Monday- Friday  
8:30AM- 5PM. A Scout Shop is also available at  
each location.

## **MacArthur Service Center**

4568 West Pine Blvd., St. Louis, MO 63108  
314-361-0600 or 800-392-0895

## **Central Illinois Service Center**

262 W. Prairie Ave., Decatur, IL 62523  
217-429-2326

## **Cohen Service Center**

335 West Main St., Belleville, IL 62220  
618-234-9111

## **Ritter Service Center**

3000 Gordonville Rd.,  
Cape Girardeau, MO 63703  
573-335-3346 or 800-335-3346

## **Southern Illinois Service Center**

803 East Herrin St., Herrin, IL 62948  
618-942-4863 or 888-942-4863

## **BSA Outfitters**

13347 Manchester Rd.,  
Des Peres, MO 63131  
314 -984-0014





# CALENDAR & BUDGET

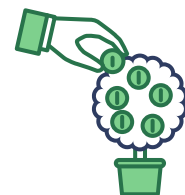
## PROGRAM DEVELOPMENT

**Every Scout deserves a fun, robust, educational and exciting program! Creating a plan at the beginning of the year will help ensure success for your crew and Scouts!**

- **First, brainstorm about fun activities, adventures, and experiences your crew could have this year. Include all the Scouts and parents, if you can, to get the most and best ideas:**
  - **What council and district level activities will you include, like summer camps, fall events, trainings, etc.?**
  - **What resources do you have in your unit? Are there parents who work at locations where you could do tours, service projects or outings such as the local fire station, radio/tv station, or cultural institutions like museums or historic sites?**
  - **What are some fun activities you may want to include, however big or small, like picnics, a trip to Six Flags, weekend camp outs, etc.?**
  - **Reach out to your unit commissioner, as well, while you are going through the process. It is that individual's job to help your unit have a healthy program.**
- **Next, your crew committee can review all the suggestions, narrow down to the activities that make sense for your unit, and plan on when they make the most sense to do.**
- **Lastly, communicate the plan to your families. That can be as simple as a printed list with the event dates to be handed out at meetings or emailed out. You could also use the talents of a parent or leader and take advantage of the services offered in Scoutbook to communicate events via calendars and reminders, create Facebook events, or create a Google calendar. Some times the best method of communication is a variation of multiple mediums!"**

## BUDGET & FUNDING

Program planning needs to also include a funding plan. Use the budget planning tool on the next page to see how much your year of Scouting will cost, and what your individual Scout and/or crew fundraising goals should be.



*See a sample budget worksheet on the next page:*

# SAMPLE BUDGET WORKSHEET

Greater St. Louis Area Council

Operating Budget

Program Expenses		Annual Cost per Scout/Unit	Number of Scouts / Adults	Total Unit Cost	
Registration Fees	# Youth	\$ 60.00		\$0.00	
Registration Fees	# Adults	\$ 36.00			
Charter Fee	Yearly flat fee	\$ 40.00		\$40.00	
Boys' Life Subscription	1/household	\$ 12.00		\$0.00	
Advancement	This depends on how much youth are advancing. Example, \$10/youth/year	\$ 10.00		\$0.00	
Recognition	1 for each youth (Thank you's, Veteran Awards, etc.)	\$ 10.00		\$0.00	
Camping Trips	<u>Location</u>				
	Camping Trip A			\$0.00	
	Camping Trip B			\$0.00	
	Camping Trip C				
	Camping Trip D				
	Camping Trip E			\$0.00	
	Camping Trip F			\$0.00	
District Events					
	Event 1			\$0.00	
	Event 2			\$0.00	
Summer Camp				\$0.00	
	Youth			\$0.00	
	Adults			\$0.00	
Program Materials	Ceremony supplies, den projects, camping items, etc.			\$0.00	
Unit Equipment	Tents, stoves, etc.				
Leader Training				\$0.00	
Reserve Fund				\$0.00	
Other Expenses				\$0.00	
<b>Total Budgeted Program Expenses</b>				<b>\$40.00</b>	
<b>Income</b>					
Annual Dues				\$0.00	
Surplus from prior year	(Beginning fund balance)			\$0.00	
Other Income	(Parent payments, etc.)			\$0.00	
<b>Income subtotal</b>				<b>\$0.00</b>	
<b>Fund-raising needed</b>				<b>(\$40.00)</b>	

*This is an example, your budget may include more or fewer lines, depending on your program.*



# FUNDING YOUR PROGRAM

**Popcorn Sales** benefit your unit and help fund the council camp scholarships, Scouting for Food, and much more!

- There is no up-front cost to your unit.
- Units pay for only the product they sell.
- Sales support local Scouting.
- A built-in prize program encourages Scouts to sell.
- Popcorn sales teach Scouts the responsibility and value of earning their way.
- Popcorn is easy to sell.
- Scouts can earn free camping at a Greater St Louis Area Council camp of their choice!
- Sign up at [www.popcorn.stlbsa.org](http://www.popcorn.stlbsa.org).
- Sale begins in August and runs through December.

*Sell through*

1. *Show & Sell (sell in person at a display table or booth),*
2. *Take Order (ask neighbors and friends to place an order),*
3. *Online Sales (create your own online store through our vendor)*



**Camp Cards** are an easy sale that help Scouts earn funds for camps and activities!

- Sale begins 2/1/2021 and ends 4/9/2021
- Earn 50% profit on every card sold
- Cards by are different by region, supporting local businesses
- Visit <https://stlbsa.org/activities/fundraising/camp-cards/> to learn more



**Friends of Scouting (FOS)** is the annual giving campaign of the Greater St. Louis Area Council. The FOS campaign provides nearly 20% of the council budget every year. That means that a significant portion of the council budget comes from the generosity of Scouting families, alumni and community supporters. Without this funding, our council could not supply the resources necessary to provide a quality, adventure-filled Scouting program.

Each gift to the council provides tremendous assistance for:

- insurance for leaders and participants
- improving camp properties for your Scouts and future Scouts
- financial assistance for families in need
- volunteer training and support
- growing the Scouting program



[STLBSA.ORG](http://STLBSA.ORG)



# MEMBERSHIP

---

We believe that Scouting is the best leadership and character development program for youth and strive to ensure that every youth in every community has the opportunity to join. As a leader in your unit, you can ensure other families in your community receive that invitation, while also ensuring that your unit grows and continues to thrive and provide life changing program for young adults.

## How to grow your crew

Most youth join Venturing crews through peer to peer recruitment or through a partner Scouts BSA troop.

Best practices to ensure your crew is growing are:

- Build a relationship with the local Scouts BSA troop(s) so that when their Scouts are interested in moving on and doing more high adventure, they already are familiar and comfortable with your crew.
- Host a crew open house every year. Families' locations and schedules are ever changing, so some Scouts will join your crew because they are new to the community or are looking for new and different activities.
- Encourage Scouts to recruit their friends, perhaps by having every Scout invite a friend to attend a certain activity or event with the crew.



---

***For resources and ideas to help with recruiting, visit: <https://stlbsa.org/programs/recruitment/>***

# SCOUTBOOK

**Scoutbook** is your online resource to assist with managing your unit. Included in this free app are calendars, award tracking, and other tools including ways to communicate with parents.

***SCOUTBOOK IS FREE FOR EVERYONE REGISTERED IN SCOUTING.***



***Want to know if your unit has a healthy program? Check out the Journey to Excellence score sheet on the next page! You can also use this as a tool to develop your annual program.***



Crew \_\_\_\_\_ of \_\_\_\_\_ District  
**2020 Scouting's Journey to Excellence**  
*"The BSA method for annual planning and continuous improvement"*

Item	Objective	Bronze Level	Silver Level	Gold Level	Bronze Points	Silver Points	Gold Points
<b>Planning and Budget</b>					<b>Total Points: 200</b>		
#1	<b>Planning and budget:</b> Have a program plan and budget that is regularly reviewed by the committee, following BSA policies relating to fundraising.	Have an annual program plan and budget adopted by the crew committee.	Achieve Bronze, plus crew conducts a planning meeting involving youth leaders for the following program year.	Achieve Silver, plus crew committee meets at least six times during the year to review program plans and finances.	50	100	200
<b>Membership</b>					<b>Total Points: 500</b>		
#2	<b>Building Venturing:</b> Recruit new youth into the crew in order to grow membership.	Have a membership growth plan that includes a recruitment activity and register new members in the crew.	Achieve Bronze, and either increase youth members by 5% or have at least 10 members.	Achieve Silver, and either increase youth members by 10% or have at least 15 members with an increase over last year.	100	200	300
#3	<b>Retention:</b> Retain a significant percentage of youth members.	Reregister 50% of eligible members.	Reregister 60% of eligible members.	Reregister 75% of eligible members.	50	100	200
<b>Program</b>					<b>Total Points: 800</b>		
#4	<b>Adventure:</b> Conduct regular activities including a Tier II or Tier III adventure.	Conduct at least four activities including a Tier II or Tier III adventure.	Conduct at least five activities and at least 50% of youth participate in a Tier II or Tier III adventure.	Conduct at least six activities and at least 50% of youth participate in a Tier II or Tier III adventure.	50	100	200
#5	<b>Leadership:</b> Develop youth who will provide leadership to crew meetings and activities.	Have a president, vice president, secretary, and treasurer leading the crew.	Achieve Bronze, plus officers meet at least six times. The crew conducts officer training.	Achieve Silver level, plus each crew activity has a youth leader.	50	100	200
#6	<b>Personal growth:</b> Provide opportunities for achievement and self-actualization.	Crew members earn the Venturing award.	Achieve Bronze, plus crew program includes at least three experiential training sessions.	Achieve Silver level, plus the crew has members earning the Discovery, Pathfinder or Summit awards.	50	100	200
#7	<b>Service:</b> Participate in service projects, with at least one benefiting the chartered organization.	Participate in two service projects and enter the hours on the JTE website.	Participate in three service projects and enter the hours on the JTE website.	Participate in four service projects and enter the hours on the JTE website.	50	100	200
<b>Adult Volunteer Leadership</b>					<b>Total Points: 500</b>		
#8	<b>Leadership recruitment:</b> Have a proactive approach in recruiting sufficient leaders and communicating with parents.	Have a registered associate advisor.	Achieve Bronze, plus the crew holds a meeting where plans are reviewed with parents.	Achieve Silver, plus adult leadership is identified prior to the start of the next program year.	50	100	200
#9	<b>Trained leadership:</b> Have trained and engaged leaders at all levels. All leaders are required to have youth protection training.	Advisor or an associate Advisor has completed position-specific training.	Achieve Bronze, plus the advisor and all associates have completed position-specific training or, if new, will complete within three months of joining.	Achieve Silver, plus at least two committee members have completed crew committee training.	100	200	300

- Bronze:** Earn at least 550 points by earning points in at least 6 objectives.
- Silver:** Earn at least 800 points by earning points in at least 7 objectives.
- Gold:** Earn at least 1,100 points by earning points in at least 7 objectives.

Total points earned: \_\_\_\_\_

No. of objectives with points: \_\_\_\_\_

- Our crew has completed online rechartering by the deadline in order to maintain continuity of our program.
- We certify that these requirements have been completed:

Advisor \_\_\_\_\_ Date \_\_\_\_\_

Crew President \_\_\_\_\_ Date \_\_\_\_\_

Commissioner \_\_\_\_\_ Date \_\_\_\_\_

*This form should be submitted to the Scout service center or your unit commissioner, as directed by your council.*



**Get the full form here**



# VENTURING LEADER TRAININGS

Get trained and put on the best program ever.

A trained leader is knowledgeable and more confident in their role.

Trained leaders

- impact the quality of programs
- leader tenure
- youth tenure
- safety
- and whole lot more!

In short, a trained leader is better prepared to make the Scouting program all it can be!



## E-LEARNING AT [MY.Scouting.org](https://my.scouting.org)

Visit [my.scouting.org](https://my.scouting.org) to create an account from which you can access dozens of training courses to help you be a better prepared leader in your unit.

## UNIVERSITY OF SCOUTING

**JANUARY 23, 2021**

**Southern Illinois University Edwardsville, SIUE**

University of Scouting is a one-day event offering the widest variety of training opportunities in all program areas, all in one place. This training event is for all registered leaders, covering a plethora of topics, from shooting sports, to basic leader training.

## WOOD BADGE

**FALL 2020 COURSES: AUGUST 21-23 AND SEPTEMBER 5-6, BEAUMONT SCOUT RESERVATION; AND AUGUST 28-30 AND SEPTEMBER 19-20, 2020, BEAUMONT SCOUT RESERVATION;**

**SPRING 2021 COURSE: MAY 21-23, 2021 AND JUNE 5-6, 2021 BEAUMONT SCOUT RESERVATION**

Advanced adult leader training designed to enhance leadership skills and develop more effective leaders. The Wood Badge program gives participants a greater understanding of Scouting aims and methods.

## SPECIAL NEEDS AWARENESS TRAINING

**JUNE 6, 2020, CAMP JOY  
DECEMBER 12, 2020, BEAUMONT SCOUT RESERVATION  
APRIL 10, 2021, CAMP VANDEVENTER**

For all ages. There will be activities for Cub Scouts and Disabilities Awareness Merit Badge for Scouts BSA. Attend this training with professionals in the field of Special Needs and Education for the opportunity to learn how to provide the best services for every Scout.



[STLBSA.ORG](https://STLBSA.ORG)

# YOUTH PROTECTION TRAINING



---

***PROTECTING OUR YOUTH CAN ONLY BE ACHIEVED BY EVERYONE COMMITTING TO THAT PROTECTION.***

The BSA places the highest importance on providing a secure environment for all Scouts. Youth Protection Training is required for all BSA -registered volunteers- regardless of position- and must be completed every two years. However, you do not have to be registered member of the BSA to take the training. Every parent involved in Scouting is encourage to complete the course which is available 24/7 at [my.scouting.org](https://my.scouting.org)

- No new leader can be registered without first completing the training.
- No Unit may re-charter without all leaders current on their Youth Protection Training.
- Adults accompanying a Scouting unit who are present at the activity for 72 total hours or more must be registered as a leader, including completing criminal background check and Youth Protection Training. The 72 hours need not be consecutive.

---

**Take it now at: [scouting.org/youthprotection](https://scouting.org/youthprotection)**

# VENTURING YOUTH TRAININGS

*Get trained this year!*



## National Youth Leadership Training (NYLT)

NYLT is advanced training for youth leaders in Scouts BSA troops and Venturing cews. Throughout this week-long outdoor training conducted during summer camp, Scouts grow and improve their leadership skills while following the guidelines of the Scout Oath and Law.

NYLT offers a land-based and water-based course. The water-based course, called Pack and Paddle, is conducted in the S bar F Scout Ranch back country and on Nims Lake. In addition to leadership skills, participants also practice low-impact camping, hiking, canoeing, and learn the proper use of compass for navigation.

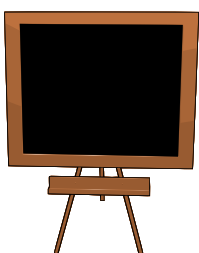
June 13-19 Camp Sakima S-F,  
June 20-26 Camp Sakima S-F,  
June 27-July 3 Camp Sakima S-F,  
July 11-17 Camp Sakima S-F,  
July 25-31 Camp Warren Levis.



## Den Chief Training

A den chief is a Venturing Scout who assists a Cub Scout leader at den and pack meeting and other Scouting events. Den Chief training is for Scouts who desire a leadership role and are interested in working with younger Scouts.

Check out our council website for training dates coming in Fall 2020 and Spring 2021!



[STLBSA.ORG](http://STLBSA.ORG)

# VENTURING EVENTS

## *Must-attend events and activities*

### STL AFTER DARK

**JANUARY 9, 2021**

#### **St. Louis**

Stay up all night with your friends at a lock-in that starts with night tours and adventures around St. Louis and ends with all-night activities inside the YMCA. Bond with your Crew and make new friends at this action-packed event!

### TASTE OF VENTURING

**MARCH 26 - 28, 2021**

#### **Camp Warren Levis**

Venturers and those interested in learning more about Venturing are invited to this exciting event. Experience high adventure, camp out under the stars, and enjoy loads of games, shooting sports, STEM, and aquatic activities.

### SWIFT'S BIG KICKOFF

**MARCH 26 - 28, 2021**

#### **Swift High Adventure Base**

Help to improve the Swift Base and set up some of the programs for the summer. Then after completing some amazing projects, try out some of the fun! Mountain boards, waterfront, boats, games, sports and more will all be available. Saturday night will be a Bonfire Celebration and potluck dinner.

### CELEBRATION DINNER

**AUGUST 8, 2021**

Join with all of Venturing and Sea Scouting in the Greater Saint Louis Area Council to look back over the past year. All in Venturing and Sea Scouting, as well as friends and family, are invited to attend. The Ranger, Quest, TRUST, Summit, Sea Scout Quartermaster, Venturing Leadership, Sea Scout Leadership awards will be presented, and the Venturing Pathfinder and Discovery will be recognized.



# GOOD TURN EVENTS

## DO A GOOD TURN FOR YOUR COMMUNITY.

A service project is a special Good Turn that puts Scout spirit into action. Projects can take many forms such as a community cleanup, repairing a place of worship, improving a wildlife habitat, or organizing a recycling effort.

Be sure to report all service hours. We want to keep track of all the good Scouting does for the community, and it is a key measurement goal in the Journey to Excellence program. Last year, Scouts in the Greater St. Louis Area Council performed 226,077 hours of service to their communities.

To easily log your unit's service hours, visit <https://stlbsa.org/activities/community-service-log/>



### SCOUTING FOR FOOD

NOVEMBER 14, 2020 | BAG DISTRIBUTION DAY  
NOVEMBER 21, 2020 | BAG COLLECTION DAY

[SFF.STLBSA.ORG](https://sff.stlbsa.org)

Scouting for Food is the council's annual service project and the largest one-day food drive in the Boy Scouts of America.

The campaign is launched on "Bag Distribution Day" when Scouts distribute more than 1 million plastic bags to residences. The Scouts return to neighborhoods the following week on "Bag Collection Day," to retrieve the bags filled with donated non-perishable food.

Each year, Scouting for Food collects about 2 million items of food— enough to provide more than 1.5 million meals for those in need.

### MEMORIAL DAY GOOD TURN

MAY 24, 2020  
MAY 29, 2021

**Jefferson Barracks National Cemetery and  
United Hebrew Congregation (St. Louis)**

[STLBSA.ORG/MEMORIAL-DAY-GOOD-TURN](https://stlbsa.org/memorial-day-good-turn)



For more than six decades, Scouts have been decorating graves with an American flag to honor veterans for Memorial Day.

At Jefferson Barracks National Cemetery, the tradition, entering its 72ND year, is one of the longest running Memorial Day events within the Boy Scouts of America. This Good Turn begins with a solemn procession into the cemetery and short 30-minute ceremony honoring deceased military personnel. Following the ceremony, Scouts and Venturers place an American flag at more than 150,000 graves throughout the cemetery.

Members of all religions and ages are also invited to help place over 7,000 flags on the graves of our war veterans at St. Louis area Jewish cemeteries. The event is sponsored by the Jewish War Veterans and the Jewish Committee on Scouting. Youth perform a brief ceremony at each grave site for a meaningful experience.

Scouts of all ages and from all districts are invited to participate in both Good Turn events.



[STLBSA.ORG](https://stlbsa.org)





**PROUDLY PRESENTED BY:**



**Activities to Look Forward to:**

- Climbing Towers
- BB Guns
- Archery
- Obstacle Courses
- Escape Rooms
- Blacksmithing
- Ferris Wheel
- Axe Throwing
- Lumberjack Games
- Fishing
- Duty to God
- Kayak Races
- Drone Demos
- Crate Stacking
- Mini Golf
- Virtual Reality
- Slack Lines

**Full ScoutFest Event Guide at:**  
**[www.scoutfest2020.com](http://www.scoutfest2020.com)**

# ScoutFest 2020

October 2-4, 2020

Forest Park, St. Louis, MO

ScoutFest 2020 is a once-a-decade, regional Scouting camporee organized by the Greater St. Louis Area Council, presented and supported by Centene Charitable Foundation and World Wide Technology.

Expected attendance is 20,000 people across one weekend in Forest Park, the largest Scouting gathering in the country in 2020! ScoutFest 2020 is open to the whole family, including Cub Scouts, to camp overnight in St. Louis's iconic park. Exciting program and activities are currently being developed by volunteers and youth, and will include live performances and fireworks on Art Hill, STEM and robotics, climbing walls, water sports, competitions, and much more!

**Website:** [scoutfest2020.com](http://scoutfest2020.com)

**Facebook:** /scoutfest2020

**Instagram:** @scoutfest2020

**Snapchat:** @scoutfest2020

**Email contact:** [scoutfest2020@scouting.org](mailto:scoutfest2020@scouting.org)



[STLBSA.ORG](http://STLBSA.ORG)



# CAMP PROPERTIES

**COME EXPLORE WITH US**

## **Beaumont Scout Reservation:**

In Southwestern St. Louis County sits 2,400 acres of wooded, rolling hills and adventure called Beaumont Scout Reservation. This multi-use property is located just 20 minutes from downtown St. Louis.

Beaumont offers countless activities and facilities for Scouts, featuring:

- New climbing complex
- Mud Cave exploration
- Swimming pool
- High and low challenge courses
- Cub World
- Nagel Explorer Base (home of the council's horse programs)
- 8 Cabins (including climate-controlled options)

At the heart of Beaumont is the Emerson Center, a multi-use dining and meeting facility. This building includes:

- 5,000+ square foot dining hall
- Climate-controlled comfort
- Two built-in AV areas
- Large industrial kitchen
- Multiple breakout rooms

The Emerson Center is commonly used for Blue and Gold banquets, Courts of Honor, various trainings, and other large events.



Visit [www.stlbsa.org](http://www.stlbsa.org)  
for more information about the  
properties and to make reservations.



# CAMP PROPERTIES

**COME EXPLORE WITH US**

## S bar F Scout Ranch:

One of the foremost Scout camps in America, "The Ranch" features 5,200 wooded acres including Nim's Lake, a 270-acre swimming, boating, and fishing facility at the heart of the property. The 3-Notch Trail system explores all points of S-F and offers a great experience for backpacking, trail cooking, and team building.

Leadership Hall is our 16,000 square foot climate-controlled dining facility, complete with AV capabilities, private restrooms, and a large stone fireplace.

S-F features the "tree houses," which are elevated, 3-sided bunk structures on the edge of Nim's Lake. Additional cabins are located near the camporee field and at Swift Base. Adirondack and tipi camping is also available. Don't forget to visit Castle Rock, one of the most popular destinations at S-F!

## Camp Warren Levis:

Camp Warren Levis, located just north of Alton IL, is 250 rolling acres of outdoor fun. A beautiful private lake accommodates boating and fishing activities.

Swaim Lodge Dining Hall, is climate controlled in the winter and seats up to 200 people.

Program Areas include a bouldering wall, canoes, pedal boats, council ring, GaGa pit, pool, archery, BB guns, rifle, climbing/rappelling at Pere Marquette State Park, and a chapel.

## Camp Lewallen:

Located along the St. Francis River in Southeast Missouri, Camp Lewallen features a new Climbing Complex, all terrain vehicle programs, a serene private lake, and large open fields.

The Earl Jarvis Dining Hall is a large dining facility with plenty of meeting room space and a large fireplace.

Mount Logan serves as the backdrop to this Scouter's paradise, and features two trails to explore its beautiful view.



Visit [www.stlbsa.org](http://www.stlbsa.org)  
for more information about the  
properties and to make reservations.



[STLBSA.ORG](http://STLBSA.ORG)

# CAMP PROPERTIES

**COME EXPLORE WITH US**

## **Camp Joy:**

Camp Joy, in Carlyle IL, features a private 12-acre lake, beautiful council ring, large pavilion, first-class shooting range, and a complete challenge course.

Campers return to Joy year-after-year to paddle on the lake, learn all about shooting sports, go fishing and hiking, and much more!

## **Rhodes France Scout Reservation:**

Rhodes France is located south east of Pana IL, and is 640 acres of Scouting paradise.

With two lakes, an in-ground swimming pool, excellent shooting sports facilities, and a well-stocked trading post, Scouts will never be short of things to do.

## **Camp Vandeventer:**

Camp Vandeventer is located near Waterloo, Illinois surrounded by beautiful scenery including bluffs and a large creek. Amenities include a large dining hall, chapel, shooting range, a creek, a fort, and a trail that goes through camp.

Scouts come from all over to experience the natural rock climbing and rappelling cliffs located in the heart of camp!

## **Pine Ridge Scout Camp:**

Tall pines, abundant wildlife, Little Grassy Lake, and beautiful sunsets make Pine Ridge Scout Camp an excellent location for Scouts. This 150-acre camp is just southeast of Carbondale, Illinois. Rock climbing, kayaking, canoeing, fishing, and more are all available at Pine Ridge.

Two cabins, a dining facility and pavilion, and many beautiful campsites are available for your unit to enjoy.

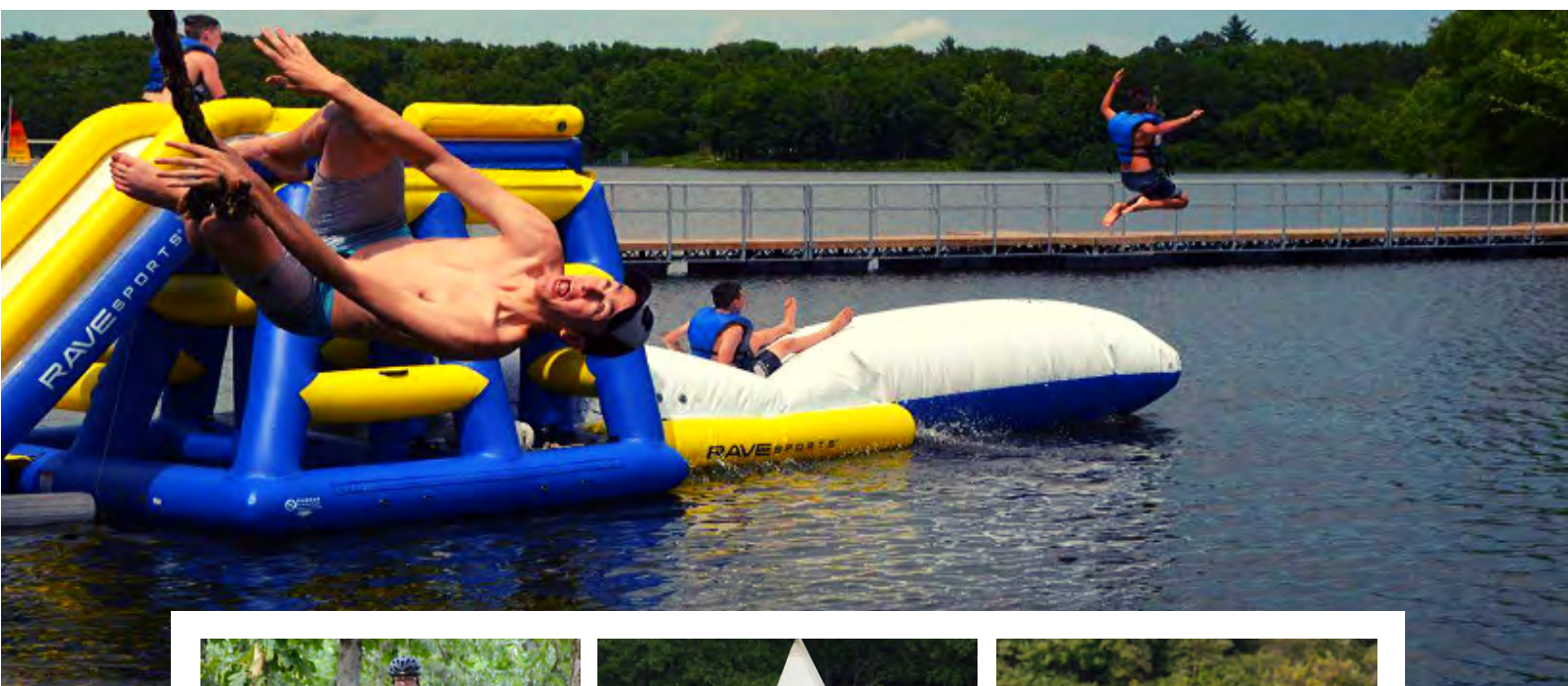


Visit [www.stlbsa.org](http://www.stlbsa.org) for more information about the properties and to make reservations.



[STLBSA.ORG](http://STLBSA.ORG)

# THE BEST SUMMER YET



## *Venturing summer camp*

A year of Venturing is not complete without spending a week at Swift High Adventure Base, the premier Venturing Summer Camp in the Midwest!

Get all of the dates, locations and times here: [STLBSA.ORG](https://STLBSA.ORG)



[STLBSA.ORG](https://STLBSA.ORG)

# VENTURING SUMMER CAMP

## *AT SWIFT HIGH ADVENTURE BASE*

One of the few  
Venturing Camps in the  
U.S.!

High and low  
challenge courses

Sailing

Water skiing, tubing, & kneeboarding

Horses

Pistol, rifle, & shotgun shooting

Sporting arrows

Dances

Kodiak Challenge

Rock climbing & rappelling

Mountain boarding

Powderhorn

Will this be your second week of  
summer camp in 2020? Make sure  
to ask about our 2nd Week  
Discount!



STLBSA.ORG

# VENTURING SUMMER CAMP



## Specialty Camps

**What is a Specialty Camp?** Specialty camps offer programs focused on a particular interest. All specialty camps provide adult supervision, so Scouts can attend individually, if needed.

### S-F Ranger Program



- Explore the back country of S-F
- Blacksmith
- Black powder rifle shooting
- Cook trail meals
- Explore old homesteads

**Qualifies for 2nd Week Discount**

### Catholic Adventure Week



Enjoy a week of camp with an emphasis on your faith

Daily Mass

Visits by Clergy

All merit badges, novas, and other programs traditionally offered at camp

**Qualifies for 2nd Week Discount**

### Horse Camp



Horsemanship

Trail rides

Swimming

Shooting Sports

Climbing

Challenge Courses

Visit [stlbsa.org](http://stlbsa.org) for dates and prices.

### Eagle Trail



- Eagle-required merit badges
- Life-to-Eagle process
- Cultural programs

STEM merit badges and Novas

**Qualifies for 2nd Week Discount**

### STEM Week



40 STEM merit badges to choose from!

Visits by engineers, chemists, mathematicians, and more!

NOVA Awards

Evening STEM programs and exhibits

**Qualifies for 2nd Week Discount**



# VENTURING SUMMER CAMP

## ***CAN'T ATTEND CAMP WITH YOUR CREW?***

### ***JOIN A PROVISIONAL UNIT!***

Scouts who can't attend summer camp with their crew can sign up for our provisional unit at Famous Eagle or a crew at Swift Base! Leadership is provided and Scouts can sign up individually. Scouts will have access to all of the programs offered at these camps.

## **CAMPERSHIPS (FINANCIAL ASSISTANCE)**

Every youth deserves the opportunity to attend summer camp, regardless of financial situation. The Greater St. Louis Area Council offers several ways for Scouts to earn their way to camp, including popcorn sales and camp cards. For those Scouts who need additional assistance, camperships are available. Apply at [stlbsa.org](http://stlbsa.org).

## **DISCOUNTS**

**Second week discount:** Attend a week of Scouts BSA or Venturing summer camp and get \$100 off a second week of camp (excludes National Youth Leadership Training, and Horse camp). Or, get \$50 off a GSLAC camp if you spend a week at another council's camp or high-adventure base.

**Family discount:** A \$100 discount is available for siblings who attend a GSLAC Scouts BSA or Venturing camp.



## **CAMP STAFF , THE ULTIMATE CAMP EXPERIENCE**

Each year, the Greater St. Louis Area Council hires dedicated and passionate individuals to serve on summer camp staff. Staff members provide a fun, positive experience for campers, all while earning a salary! They also have the opportunity to earn a college scholarship worth up to \$1,250.

Visit the Camp Staff page at [stlbsa.org](http://stlbsa.org) this Fall for the 2021 Camp Staff application and interview information.

## **TAKE CAMP STAFF FOR A TEST DRIVE AS A CIT!**

The Counselor In Training (CIT) program allows Scouts who are 14 or 15 years old to participate for up to three weeks as a volunteer camp staff member. Participants work in several program areas, giving them the experience to decide if working as a full-time camp staff member is something they would enjoy. The program is at S bar F Scout Ranch, Camp Joy, Camp Warren Levis, Rhodes- France, and Camp May. Lodging and meals will be provided. CIT applicants will take part in the camp staff interviews in late 2020.



[STLBSA.ORG](http://STLBSA.ORG)



# 2021 NATIONAL JAMBOREE

**Summit Bechtel Reserve  
Glen Jean, West Virginia  
July 21-30, 2021**



**40,000 Scouts, leaders, and staff**

**One of the longest zip lines in  
North America**

**World-class skate park**

**All-terrain vehicles**

**Treetop canopy tours**

**Rock climbing**

**Patch trading**

**Stadium shows**

**And much more!**

**Held every four years, the Jamboree is an amazing opportunity for everyone to experience the best of Scouting, all in one place.**

**Troops and Crews are currently forming all around the council.**

**Register today and reserve your spot for this unforgettable opportunity!**



**VENT 25**

[STLBSA.ORG](http://STLBSA.ORG)

# EXPLORING™

DISCOVER YOUR FUTURE

## WHAT IS CAREER EXPLORING?

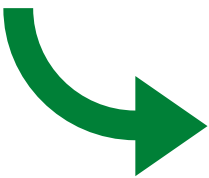


Exploring is another great program resource in our Council and provides exciting hands-on activities and adult mentorship for youth, 14-20 years of age, looking to discover their future, their career. Primarily a school year based program meeting once or twice a month with some summer opportunities. It is a fantastic program toward workforce readiness.

Whether you're a local organization looking to strengthen the community, build a pathway of talent, or a young person wanting to uncover the possibilities of your future, Exploring is a great place to start. Our Council hosts 92 Exploring Posts around the region with major focuses on Aviation, Business, Engineering, Fire/EMS, Health Care, Law Enforcement, and Skilled Trades.

Beyond the Post meetings, an annual recognition dinner is held to recognize the leadership achievements of youth, adults, and sponsoring organizations involved in our local programs.

Go to the link below to find out more on local Exploring programs, how to get involved, and steps our Council Exploring Committee takes to start new Post opportunities.



Ready to get involved in Exploring near you? Find an Exploring Post at [exploringstl.org](http://exploringstl.org) or contacting us at [stl.exploring@scouting.org](mailto:stl.exploring@scouting.org).



# ADDITIONAL RESOURCES

- Greater St Louis Area Council, BSA: [stlbsa.org](http://stlbsa.org)
- National BSA: [Scouting.org](http://Scouting.org)
- Religious awards information: <https://stlbsa.org/activities/other-activities/faith-based-events/>
- Scout supplies: <https://www.scoutshop.org/>
- Scoutbook: <https://www.scoutbook.com/mobile/>
- Succession planning: <https://www.hoac-bsa.org/Data/Sites/1/media/commissioner-service/Pack-Succession-Planning-Worksheet.pdf>
- Training and unit resource: <https://my.scouting.org/>

